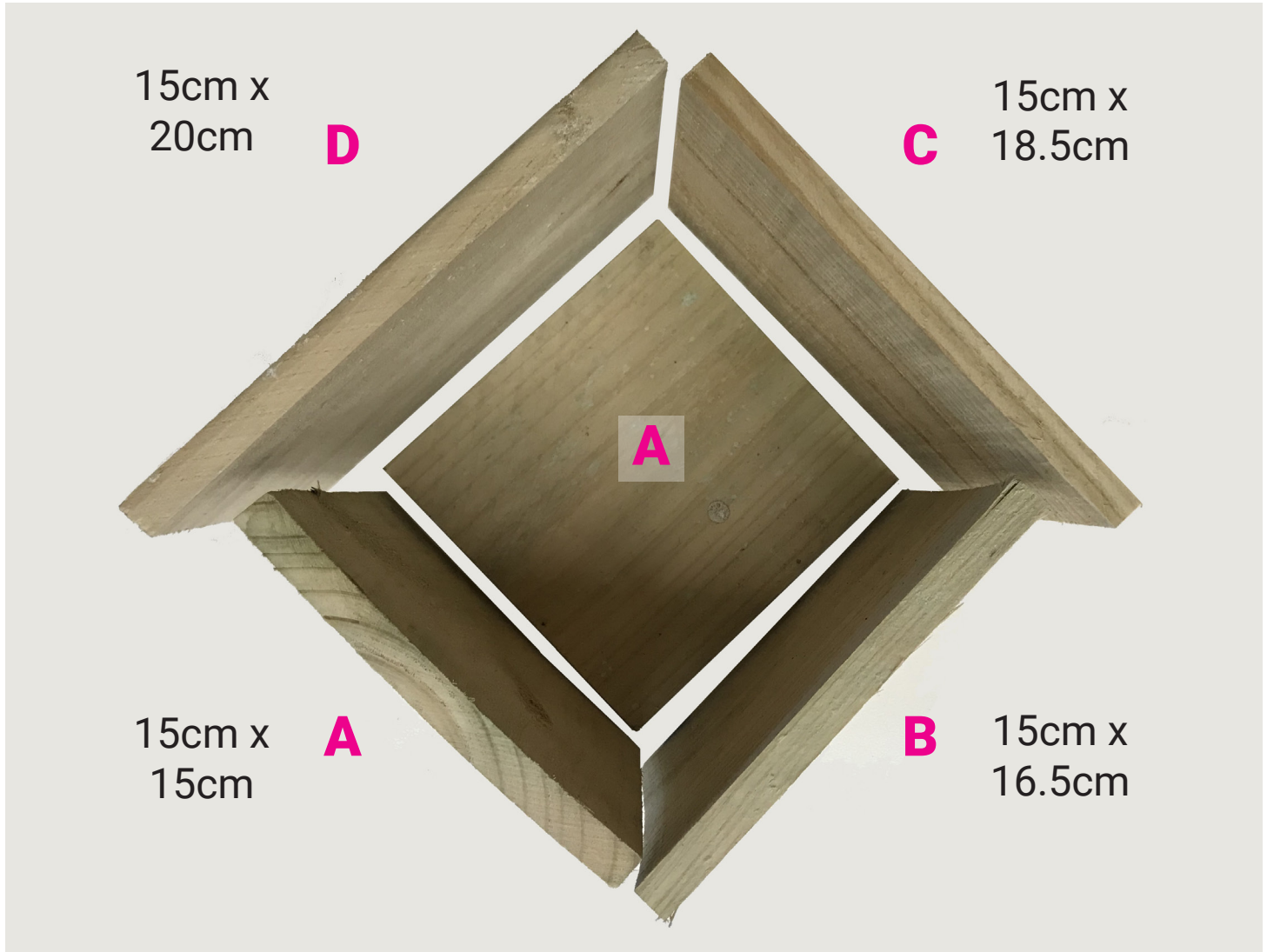


Building Your Insect Hotel



Assembly Instructions

The native bee (or insect) hotel comprises five panels of four different sizes. These are detailed in the above exploded diagram.

The sequence of assembly is as simple as piecing the panels together one after another. This can be done with nails or a staple gun.

Essentially, join the side onto the base, then join the new side onto the base and previous side. To start, attach the two same sized (15cm x 15cm) panels (**A**) to one another. Join panel **A** to the base and side of **A**; Join panel **B** to the base and side of **A**; Join panel **C** to the base and side of **B**; Join panel **D** to the base and side of **C**.



Filling the hotel

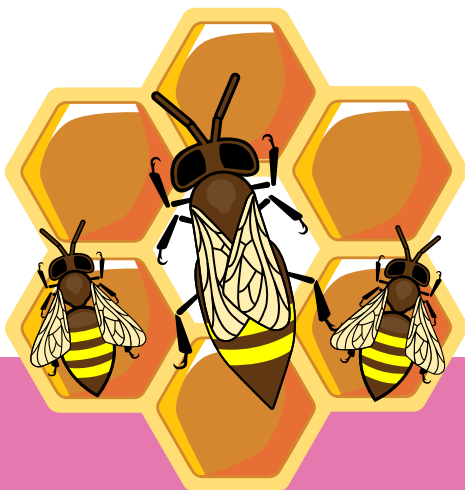
- The kit has been supplied with some dried branches and bamboo pieces cut to size.
- You can add different products to attract different insects. You can use: tree-fern fronds, dried water reeds and even natural clays.
- Once the hotel has been filled, drill a number of holes into the branch pieces to provide places to live. you can use different sized drill bits up to a maximum of 5mm.

An instructional video has been made and is available on the [Morwell Rose Garden Festival website](#).

For more information, please contact the club:

email
phone

LatrobeValleyBees@gmail.com
0409 015 237



Latrobe valley
beekeepers
association

